

FRONTIER[®]

INTERNET, TV & VOICE

Residential User Guide



FRONTIER

Welcome to Frontier® TV. This is going to be exciting. And easy.

You can find even more information such as handy tips and hints and frequently asked questions along with a number of video demonstrations and tools we have created at frontier.com/helpcenter. Just select **TV** then select **Frontier TV**. There you will find not only more details about how to use your new Frontier TV; there are also articles and videos about special features and the most current channel lineups for your area.

You can also learn all about our FrontierTV Mobile App by selecting **FrontierTV everywhere** in the Help Center.

As a Frontier video customer you can watch Live TV channels that are included in your Frontier TV package.

- Browse listings
- Rent
- Watch On Demand content anywhere and everywhere

Check it out at tv.frontier.com

 Frontier TV	starts on page 4
 Frontier TV Quick Resolution Guide	starts on page 21
 Frontier Internet	starts on page 22
 Voice	starts on page 26

All You Need to Know About Frontier® TV Service

Frontier TV

How to use the remote control.....	4
Watching Frontier TV	5
Using the set-top box remote control.....	5
Controlling live (real-time) TV.....	7
Navigating through menus and screens.....	8
Enable Audible Navigation on Frontier TV from the remote	9
Filtering channels in the Guide	10
Record your favorite shows with your DVR.....	12
Canceling scheduled recordings.....	13
How to use Parental Controls.....	13
On Demand.....	14
Pay-Per-View.....	16
Access Your TV's interactive features	17
Frontier TV apps.....	17
Explore, entertain and interact with Frontier-enabled apps	18
Setting names for receivers.....	19
Frontier TV on your computer	19
Frontier TV on your smartphone or tablet	19
Quick tips about your Frontier TV service	20

Frontier TV Quick Resolution Guide 21

Frontier Internet

Frontiernet.net.....	22
Set Up email on your home computer.....	23
Free PC Security Scan (ftrsecure.com).....	24
Assure reliable security for your Wi-Fi home network.....	24
Connect more computers to your Wi-Fi home network.....	25



Voice

Important information	26
Create sub-account voice mailboxes online	27
Top calling features	28
Unlimited digital voice quick map	30

Your important Frontier information 31

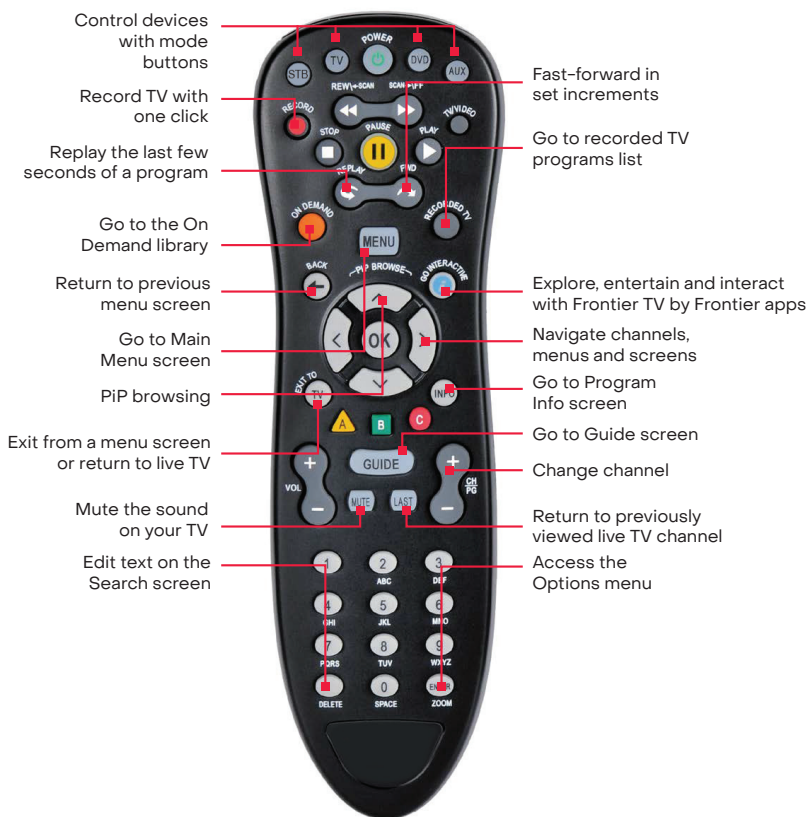
For quick reference, record your important Frontier information here

Support questions/additional resources 32

Accessibility support
Learn more about Frontier Communications products and services at frontier.com

Frontier® TV

How to Use the Remote Control



Your remote can control up to four devices

At the time of installation, your remote was set up to control your HD-ready receiver. The remote is also capable of controlling up to three other devices, such as the TV, DVD player or home theater system. You can access step-by-step instructions on how to program your TV or other devices by pressing **MENU** on your remote control and scrolling to **Help** and selecting **Remote Control Setup**.

Note: **GRAY CAPITAL LETTERS** refer to buttons on the remote control. **Black bold letters** refer to selections on your TV screen.

Watching Frontier® TV

Your set-top box, network hardware and TV should already be installed by your Frontier Technician.

To turn on your TV:

1. Turn on your TV using the power button on your TV or on your TV remote control. (Unless the technician synced your remote with your television, the **POWER** button on your set-top box remote control does not turn on the TV.)
2. Press the **POWER** button on your set-top box remote control to turn on the signal from the set-top box.



The last-watched channel appears on your TV.

Using the set-top box remote control

To pair your remote to your TV, press the **SETUP** button on the remote and hold until the light blinks twice.

Press the **DEVICE** Key you are trying to program (TV, DVD, AUX).

Press and hold the **OK** button until the device turns off.

Release the button and you are done.

Here are some important buttons on the remote control, with descriptions of how you use them. Other buttons are shown and described in later topics.

Note: The following description of set-top box remote control features applies to many but not all Frontier TV set-top box remote controls. Refer to the documents provided with your set-top box to get detailed information on its remote control.

- **POWER**. Turns the signal from the set-top box to the TV on and off.



This button does not turn the TV itself on and off. Use the TV remote control or the power button on your TV set to turn the TV on and off.

- **CHANNEL/PAGE**. Press + or – to move up or down a channel. Holding a button down continues the movement. After a channel changes, the screen shows the program that is playing now and the Channel Peek. The Channel Peek contains basic information about the program that is playing (for example, the channel number,

channel identifier and title of the program) and disappears after a few seconds. You can also use the **CHANNEL/PAGE** button to scroll up and down one screen at a time through some Frontier TV screens.



A word about channel selection on your Channel Guide: You will notice that your channel lineup shows only one channel number for each channel. Although many of the channels in your lineup are broadcast in HD, we only list it once on your channel guide. To watch in HD, simply tune into the channel number on the channel lineup for your location. If your TV is HD ready, the selected channel will be presented in HD when available.

- **VOLUME.** Use this button on the remote control—not the volume button on the TV or on the TV remote control—to turn volume up and down.



Note: On some TV sets, you may have to use the TV controls to set the volume near the middle of its range before using the set-top box remote control to control volume.

- **MUTE.** Press **MUTE** to turn the sound off. A mute icon appears on the screen for a few seconds and then disappears. Press **MUTE** again to turn sound back on.
- **ARROW BUTTONS.** Use these buttons to navigate and select items in Frontier TV screens. You can also use these arrow buttons while watching TV to bring up and navigate in Peeks.



- **OK.** Activates a selected item in a screen.



- **MENU.** Gives you quick access to the features of your video service.



Pressing the **MENU** button on the remote control displays the **Main Menu Peek** that contains top-level options such as **Browse Live TV** and **On Demand**. Using **UP ARROW** and **DOWN ARROW**, you can navigate among the options.

- **GUIDE.** Displays the Frontier® TV program guide, which lists the shows that are on now and will be available during the next two weeks.



- **RECORDED TV.** Displays all recorded shows currently stored on your set-top box. You can also schedule recordings from the **Recorded TV** screen.



- **ON DEMAND.** Displays a list of videos that you can rent on demand.



- **INFO.** Displays the **Program Info** screen with information about the program you are watching, a program selected in the program guide or a program selected in a list, such as currently rented videos. The **Program Info** screen also shows options you can select for that program, such as **Record Episode** or **More Showtimes**.



- **BACK.** Returns to the most recently viewed Frontier TV screen.



- **EXIT.** Closes the Frontier TV screen and returns to full-screen video.



Controlling live (real-time) TV

You control television programs that are currently showing in real-time (called “live TV” in this guide) using playback control buttons to pause, fast-forward and rewind live TV.

To control live TV:

1. Press **PAUSE** on the set-top box remote control to pause the program for up to 60 minutes. The image freezes. A progress bar shows the following:
 - The time at which you paused (shown as a vertical line with the time above it).
 - How much time has elapsed since you paused the program (shown as the shaded area after pause time).

If you pause longer than the maximum amount of time allowed, the program automatically begins playing again from the point at which you paused it.

2. Press **PLAY** on the remote control to resume playing the program from the point at which you paused it. You can also do the following:
 - Press **FF** on the remote control to fast-forward continuously or press **SKIP** to jump forward in short segments up to the point at which the program is playing in real time. Press **FF** once, twice, three times or four times to fast-forward at increasing speeds.
 - Press **REW** to rewind continuously or press **REPLAY** to jump backward in short segments. Press **REW** once, twice, three times or four times to rewind at increasing speeds.

The progress bar for live TV

The progress bar for live TV shows the following:

The point you are watching in the recorded portion of the program, indicated by a vertical line with the time above it.

How far you can rewind or fast-forward, indicated by the shaded areas before and after the point in the program that you are currently watching.

The point at which you would be watching live TV, indicated by the end of the forward shading.

The progress bar disappears after a few seconds. You can display the progress bar at any time by pressing **PLAY** or **OK** on your remote control.

Navigating Through Menus and Screens

Use the arrows and OK on your remote control to navigate to and select programs and other items on Frontier TV menus and screens.

To select items in Frontier® TV menus and screens:

1. Use the arrows on your remote control to move the border highlight right, left, up or down. The border highlight shows your selection.
2. Press **OK** on your remote control to make your selection—that is, to make that highlighted action occur.
3. Press **BACK** on your remote control to return to the screen that you were viewing before the current one.

Peek

A Peek is a slide-in element that appears at an edge of the TV screen as a result of pressing a set-top box remote control button. Peeks do not interrupt the audio experience, but will narrow the area of the TV screen that can be seen.

Get more information about Peeks at frontier.com/helpcenter. Select **Frontier TV**. Find the video about Channel Peeks in the Video Gallery.

Enable Audible Navigation From the Remote

To enable Audible Navigation on Frontier® TV from the remote:

1. Select **MENU** button.
2. Press **DOWN ARROW** four times to select **Options**.
3. Press **OK** button.
4. Press **DOWN ARROW** twice to select **Audio/Language**.
5. Press **RIGHT ARROW** six times to select **Audio Navigation**.
6. Press **OK** button.
7. Press **RIGHT ARROW** to select **Enabled**.
8. Press **OK** button.
9. Press **LEFT ARROW** to select **Done**. Press **OK** button to save.

To turn audible navigation off follow same steps above, selecting the bottom option **Disabled**.

To find and watch a current program in the Guide:

1. Press **GUIDE** on the remote control. The Guide screen appears. High-definition programs are indicated by the HD symbol.
2. Use the following buttons on your remote control to select a program:
 - Use **CHANNEL/PAGE** and **UP ARROW** and **DOWN ARROW** to scroll vertically through the Guide.
 - Use **RIGHT ARROW** and **LEFT ARROW** to scroll horizontally through the Guide.
3. To begin playing the selected program, press **OK** on your remote control. If the program is currently available, it begins playing. If the program is not available because it is scheduled for a later time, a **Program Info** screen appears.
4. Use the arrows and **OK** to select one of the options provided on the **Program Info** screen (for example, **Record Episode**), or use **BACK** to return to the Guide.

The options provided on the **Program Info** screen depend on the type of program selected and when the program is playing.

Using the Program Info Screen

The **Program Info** screen displays information about a selected program and also enables you to perform various actions related to the program, such as watching or recording it.

To display the Program Info screen for a program:

1. In the Guide, use the arrows on the remote control to select the program, and then press **INFO** on the remote control.
2. If you are watching in full-screen mode, press **INFO** while watching the program.

Audio Language

The Audio Language option on the horizontal menu bar displays the available languages for a particular program. Use the arrows and press **OK** to select the language.

Filtering channels in the guide

To find the programming you want, there are a number of ways to filter content that appears in Guide views and other areas, such as Channel and Browse Peeks. You can filter by channel and by program in the Guide.

Channel Filtering

You can filter channels in any of the following ways:

- **Favorite Channels lists.** You can customize multiple lists of channels for display in Guide views. While you have a Favorite Channels list selected, Guide views, Channel Peeks and Browse Peeks only display channels from the selected list.
- **Channel categories.** Channel categories are pre-defined groupings of channels that help you browse for related content. When you select a channel category, it applies to the current Guide view only and does not affect future Guide views, Channel Peeks or Browse Peeks.
- **Hidden channels.** You can hide channels in Guide views using the channel map.

You can use one or more of these filters together. For example, you can apply the subscribed filter to a list of hidden channels. You can then select a favorites list and reorder the channels list. These actions result in a display that shows all subscribed channels that are hidden and are in the favorites list. The channels are displayed in the order set by channel reordering.

Favorite Channels lists

A Favorite Channels list is a customized list of channels for display in Guide views. You can abbreviate Guide views to contain only the channels that you choose and also create multiple Favorite Channels lists; for example, a list for each member of the household.

You can access the Favorite Channels list set up from the:

- **Settings screen.** From the Main Menu, select **Settings**, go to **Television** and then select **Set Up Favorites**.
- **Options Peek.** From the Options Peek, select **Edit Favorites**.

You can select a Favorite Channels list from the:

- **Browse Live TV screen.** From the Main Menu, go to **Browse Live TV**, select **Favorites** and then select the list you want. You see currently configured favorites lists as tiles. If no favorites lists have been configured, then no tiles are displayed, and there are no current lists to choose from. Once you set up a list, the tile that represents your list appears.
- **Options Peek.** From the Options Peek, select **Favorites Lists**, and then select the list you want.
- **Favorites Lists.** To select an active Favorite Channels List.
- **Add to Favorites.** To add the currently tuned channel to the active Favorite Channels list.

OR

Remove from Favorites. To remove the currently tuned channel from the active Favorite Channels list.

Edit Favorites. To update the channels in your Favorite Channels lists.

Channel Categories

You can use categories to access channels that are grouped together by subject matter, genre or content provider.

To find program categories:

1. Press **MENU** on your remote control, select **Browse Live TV** and then select **Categories**.

The **Categories** screen appears.

Alternatively, open the **GUIDE**, open the **Guide Options** Peek, select **Channel Categories** and then select the category you want.

2. Use **UP ARROW** and **DOWN ARROW** to highlight a subcategory, and then press **OK** to select it. A filtered Program Guide appears.

Note: The service provider determines the exact contents of each category.

3. Press **EXIT** to return to full-screen display.

Channel reordering

You can manually reorder the sort order of individual channels in the channel guide and all lists, including Favorites lists and filtered lists.

Find more information about manually reordering channels at frontier.com/helpcenter. Select **Frontier® TV**. Select **Frontier TV User Guide** from the User Guide menu.

Record your favorite shows with your DVR

One DVR, one experience, any receiver.

The Total-home DVR has up to 1 TB storage and the ability to record up to six shows at once, viewable on any TV:*

- Schedule, update or delete your recordings from any room in your home.
- Pause your recorded show in one room and pick it up where you left off in another.
- Pause and rewind live TV or recorded shows from any receiver.
- Set Parental Controls for Frontier Movies, Pay-Per-View and live or recorded shows.

Pause, fast-forward and rewind live TV from any receiver

Your Total-home DVR stores up to 60 minutes of the live TV channel you're watching, on up to four of your receiver-connected TVs at the same time! (When you change channels, your DVR will begin storing the new program instead.) You can rewind live TV by pressing **REW**. You can also freeze live TV for up to 60 minutes by pressing **PAUSE** (press **PLAY** to restart).

*The number of channels that can be streamed simultaneously is dependent upon the bandwidth to the home and how your home is provisioned. DVR not included with U-basic packages. Models may vary. Total-home DVR functionality is available on up to eight TVs and requires a receiver for each additional TV.

Record the program you're watching from any receiver:

1. Press **RECORD** on your remote control to begin recording the program you're watching. The Record light on your receiver remains lit until recording stops automatically at the program's scheduled end time.
2. You can also press **STOP** to end recording at any time.
3. Press **OK** to confirm.

Schedule program or series recordings from the Guide from any receiver:

1. Press **GUIDE**.
2. Use **UP/DOWN ARROWS** to scroll to the program you want to record.
3. Press **RECORD** once to record a single show (one red dot appears).
4. Press **RECORD** twice to record the whole series (three red dots appear).
5. Press **RECORD** three times to cancel recording.

Search for a show or series you want to record from any receiver:

1. Press **MENU**, select **Live** and use the **DOWN ARROW** to select **Search**.

2. Press **OK**.
3. Choose **Options** to narrow your search, or type the show title (use **ARROWS** to highlight a letter, then press **OK** to select it).
4. Highlight the show you want when it appears and press **INFO** to record a single episode or the whole series.

Watch your recordings from any receiver:

1. Press **RECORDED TV** and select **Browse Recordings** to see a list of your recordings.
2. Highlight a show and press **OK** to see a Program Info screen, then select **Play** to watch the program.

Now you can watch hit TV shows in more places.

Take the Frontier® TV experience with you on your computer, smartphone or tablet with an extensive library of On Demand programs.

Canceling scheduled recordings

You can use the Program Guide or the **Recorded TV** screen to cancel a single recording or a series recording.

In the Program Guide, individually scheduled recordings are marked by a red dot, and series recordings are marked by three overlapping dots.

To cancel a recording from the Program Guide:

1. In the Program Guide, use the **CHANNEL/PAGE** button and arrow buttons on your set-top box remote control to locate and select the program for which you want to cancel recording.
2. Identify the type of program for which you are canceling recording and use the **RECORD** button accordingly:

- If the program you want to cancel is an individually scheduled recording (shown by a single red dot), press the **RECORD** button on your remote control twice.

The first press changes the program to a series recording (three overlapping dots), and the second press cancels the recording (the dots disappear).

Press the **RECORD** button again to cancel the recording.

- If the program you want to cancel is a series recording (three overlapping dots), press the **RECORD** button once.

This cancels the entire series recording, and the dots disappear from the Program Guide.

How to use Parental Controls

Once you have a personal identification number (PIN), you can restrict viewing by TV or movie rating, all adult-only programming, who can rent Frontier TV Movies and more.

1. Press **MENU**, then **RIGHT ARROW** to **Options**, then down to **Parental Locking**. Press **OK**.
2. Use the remote control's number pad to enter your four-digit PIN and press **OK** (press **DELETE** to clear an entry). You'll have to enter your PIN twice. The **Parental Locking** screen will appear with your locking options.

Be sure to scroll down to the second page if you want to lock adult-only content, titles and posters from the standard channels, Frontier® TV Movies and purchases from Account Manager.

On Demand

Frontier TV On Demand is like having an entertainment superstore in your living room. Watch what you love, whenever you want! You'll find:

- **Frontier TV Movies:** Choose from a huge selection including new releases and titles available the same day as DVD.
- **Free shows On Demand:** Watch movies, kids' shows, sports, hit TV shows and more—all for free—based on your subscription package.¹
- **Premium On Demand:** Watch hit TV shows from premium providers like HBO,[®] STARZ[®] and SHOWTIME,[®] based on your subscription package.
- **Subscription On Demand packages:** Get unlimited access to specialty programming—kids' shows, anime, karaoke and more—for a low monthly fee.

Press **ON DEMAND** on your remote control to get started.

Tune to Channel 200 to see what's new On Demand with behind-the-scenes features and movie trailers.

Rent movies On Demand

Frontier TV Movies is changing the way you watch.² Movies the way they're meant to be seen. The newest releases up to a month before Netflix. The best entertainment, no envelopes attached.

Rentals are usually available for 24-hour timeframes, or extended-viewing timeframes up to three days. Many are available in HD. Here's the fastest way to browse Frontier TV Movies:

1. Press **ON DEMAND** on your remote control, use **ARROWS** to select **Frontier TV Movies** and press **OK**.
2. In **Movies**, you can browse through categories like **Just In** and **New Releases**, or you can see all available movies at a glance by highlighting **All Movies** and pressing **OK**.
3. When you find the movie you want to rent, highlight it and press **OK** (if parental locks are set, enter your PIN), then select **Rent** and press **OK**.
4. Press **OK** again to confirm and the program will begin.

Note: While browsing, you can highlight a title and press **INFO** to see details about the program and even rent from the **Program Info** screen.

¹Free On Demand programming varies by package subscription. Subscription to appropriate package is required to access FREE and/or PREMIUM HD On Demand titles.

²Customer responsible for applicable On Demand charges and surcharges. Once an On Demand purchase is ordered, it cannot be canceled by remote or customer care. HBO®, Cinemax® and related channels and service marks are the property of Home Box Office, Inc.

Search by title or name:

1. Press the **ON DEMAND** button on your remote control.
2. Use the **DOWN ARROW** to select **Search** and press **OK**.
3. Use the **ARROWS** to highlight letters one at a time to spell out the show title or actor's name you're searching for; press **OK** after highlighting a letter to enter it in your search. (To enter a number, select **123** and press **OK** to bring up number keypad. Select **ABC** and press **OK** to return to the regular keyboard.)

Note: As you type in letters and numbers, a list of results appears. The more characters you enter, the more focused your results become.

4. When the program you're searching for is displayed, highlight it using the **UP/DOWN ARROWS** and press **OK**.
5. A Program Info screen appears showing details about the program and rental price. Select **Rent** and press **OK**. Press **OK** again to confirm and the program will begin.

To return to live TV programming, press **EXIT TO TV**.

Watch On Demand programs

Your rentals are available for you to watch at any time during the rental period.

To watch:

1. Press **ON DEMAND** on your remote control and select **My Videos** from the main Video On Demand screen.
2. Use the **ARROWS** to select the video you want and press **OK** to start watching.

You can switch to another channel at any time while you're watching On Demand programming. The show will pause automatically and you may return to it at any time (within your rental viewing time period) and resume watching exactly where you stopped it. You can also start over at any time.

To stop watching your On Demand selection before it ends or to continue watching later, press **STOP**, select **Watch Live TV** or Recordings on the screen that appears and then press **OK**.

To resume watching where you left off, select **Channel 1** at any time during the rental period. (To start watching again from the beginning, press **ON DEMAND** to see your **My Videos** screen and click the title.)

On Demand billing

Once your On Demand selection is rented, it cannot be canceled using your remote control or by calling Customer Care. You will be billed.

Your On Demand rentals will be automatically added to your monthly Frontier® bill. Prices, dates and programming are subject to change.

Note: Adult programming rentals will be listed by studio name if available; otherwise they will be identified as “adult content.”

Set Limits on Who Can Rent or Watch On Demand Shows

Parental locking options let you set limits on who can watch what. See How to use Parental Controls on page 17.

Using your coupon code is easy:

1. Press the **ON DEMAND** button on your remote control.
2. Use the **DOWN ARROW** to select **My Offers**.
3. Select **Enter New Offers On Demand Coupon** and press **OK**.
4. Enter your four-to-six-digit coupon code, then use the **LEFT ARROW** to select **Continue** and press **OK**.
5. If your coupon is currently available, select **Redeem Now** to rent.

Pay-Per-View

Get a front row seat to one-time-only events! Nothing captures the excitement of live TV better than Pay-Per-View. Unlike Frontier TV Movies, Pay-Per-View events are shown at scheduled times. You can order Pay-Per-View up to 14 days in advance. Once it's ordered, an event can't be canceled.

Channel 100 for Front Row—highlights on upcoming Pay-Per-View events

Channel 101 for Frontier TV by Frontier Pay-Per-View schedule

Channel 106 for Pay-Per-View channels

Channel 107 for TVN1A Pay-Per-View

How to order Pay-Per-View:

1. Channels 106 and 107.
Note: You can also press **GUIDE** and use the **UP/DOWN ARROWS** to select one of the Pay-Per-View channels.
2. Use the **RIGHT ARROW** to see what's coming up in the schedule. Press **FF** to jump forward 24 hours at a time; press **REW** to go back in 24-hour increments.

3. Select the program you want to order and press **OK**. A Program Info screen will appear with event time and pricing.
4. Press **OK** to rent (if parental locks are set, enter your PIN). Press **OK** again to confirm your order. Press **EXIT TO TV** to return to the channel you were watching.

DON'T FORGET! Tune to the event's channel at the scheduled start time. If you tune in late, you won't be able to rewind to view the portion you missed.

Pay-Per-View billing

Any Pay-Per-View orders you place are automatically added to your monthly Frontier bill. You'll find them in the "usage charges" section, listed by title with the date of the event and its price.

Note: Once a Pay-Per-View purchase is ordered, it cannot be canceled by remote control or Customer Care. You will be billed and the event will air on your TV set. Event schedules are subject to change. Prices, programming and offers are subject to change.

Set limits on who can rent or watch Pay-Per-View

Parental locking options let you set limits on who can watch what.

1. Use **ARROWS** to select **Options** and **Parental Locking**.
2. Select and enter a four-digit PIN.
3. Select what you want to block including purchases, programming and movies by rating.
4. Don't forget to save your changes.

Access your TV's interactive features

Two ways to Go Interactive

- Press the **GO INTERACTIVE** button on your remote control and find the app that's right for you. Press **OK** to launch it and explore.
- Press **MENU** on your remote control. Then use **ARROWS** to select **Interactive** and **Interactive Apps**. Press **OK**.

Frontier TV apps

Frontier® TV apps let you interact with your TV—and, in most cases, they're included with your Frontier TV subscription. We offer lots of seasonal apps and we're continually adding new ones, so check back often to see what's currently available.

Simply press **GO INTERACTIVE** on your remote control to explore the extensive choices. They're easy to enjoy—there's no need to switch inputs or buy extra equipment. And the few subscription apps can be purchased easily via the Account Manager on-screen app on Channel 9910.

Visit frontier.com/helpcenter for information about Multiviews, apps, widgets and games. Select **Frontier TV**. Select **Frontier TV Applications**.

Explore, entertain and interact with Frontier-enabled apps

With Frontier-enabled apps, entertainment isn't limited to one screen—you can watch, control and interact with your TV using your tablet or smartphone. Frontier-enabled apps live on your mobile device and work with your connected Frontier TV receivers. There's no need to switch inputs or buy extra equipment.

A Frontier High-Speed Internet account is required to connect a supported device to Frontier receivers.

To connect a device to a TV/receiver:

1. Connect your device to your Frontier High-Speed Internet home Wi-Fi.
2. Tune to Channel 9301 and follow these steps:
 - Read and accept the terms and conditions.
 - Change the name of the receiver (choose preset, or create a custom name).
 - Set the Connection Mode to Default (this will make it easier to manage guests and apps).

Repeat these steps with any TV you would like to use with Frontier-enabled apps.

How to find Apps:

Press **GO INTERACTIVE** on your remote control and select **Frontier Enabled** to see a full list of available apps, details about supported devices and QR codes that you can scan with your device to download apps.

Frontier High-Speed Internet service is required to connect supported devices to receivers.

Application Name	Description
FrontierTV	<p>The FrontierTV App lets you watch TV on your computer, tablet or smartphone. It's free to Frontier customers who subscribe to Frontier TV. FrontierTV supports 70+ channels of live TV, including the most popular content providers. Watch Live TV and On Demand shows, browse the programming guide, manage your DVR using our App or download popular shows from the mobile library to watch later on your device*</p> <p><small>*Requires qualifying device, Select Family or higher TV plan and Wi-Fi or data connection. Content may vary by device, TV plan and viewing location. Quality of picture varies by device and data connection. Data charges may apply. High-Speed Internet account required.</small></p>

Note: For complete details and links to the apps, go to frontier.com/tveverywhere

Setting names for receivers

You can customize the name of each TV receiver in your home. You can find out how to customize the name of your TV receivers at frontier.com/helpcenter. Select **TV** and then select **Frontier TV User Guide**.

Frontier® TV on your computer

- Watch Live Disney, ESPN, CNN and more at home or on the go with **frontier.com** online.
- Watch over 10,000 TV shows, movies, sports, music and more on your computer at no extra charge.
- View your TV listings and manage your DVR online!¹

To get started:

Visit frontier.com.

2. Log on with your Frontier ID (email address) and password.

¹TV and High-Speed Internet account required for DVR-related functions.

Frontier TV on your smartphone or tablet

Enhance your entertainment experience with the free App for your tablet and smartphone. Enjoy live TV channels or access thousands of hit TV shows On Demand! With the FrontierTV App, you can catch up or keep up with the sports, news and shows you love from wherever you are.

Get more information about using Frontier TV on your smartphone or tablets at frontier.com/helpcenter. Select **Frontier TV**. Select **Frontier TV User Guide**.

Quick tips about your Frontier® TV service

- Best ways to locate channels quickly
- See what's hot to watch now
- Watch exclusive Frontier TV channels.

Find more Quick Tips at frontier.com/helpcenter. Select **Frontier TV**. Select **Frontier TV User Guide** from the User Guide menu.

Frontier® TV Quick Resolution Guide

Find Frontier TV Quick Tips at frontier.com/helpcenter. Select **Frontier TV**. Select **Frontier TV User Guide** from the User Guide menu.

Want more help? Frontier Getting Started has answers all in one place online at frontier.com/helpcenter. You can also chat live with an agent while getting started, or call 1-800-219-6877 and say, “Frontier TV Technical Support.”

Check the remote’s user manual provided at installation, or watch Help On Demand on TV: Press **MENU**, select **Help**, then **Help On Demand** to see all program titles.

Watch Help On Demand—tune to Channel 411

Get more out of your Frontier service: Watch Help On Demand videos about these topics on Channel 411, the Help Channel.

These videos will walk you through how to customize and use your Frontier equipment, record your favorite shows, take advantage of your interactive television or voice services, troubleshoot issues and other features that will allow you to enhance your Frontier TV experience.

Welcome to Frontier Internet

Now that your Frontier® High-Speed Internet service is installed, every networked computer in your home can share the same connection on a Wi-Fi home network. Need to set up internet-connectable devices, such as a surveillance camera, game console or other remote-access tool? If yes, then go to frontierhelp.com/faq.cfm for easy set-up instructions.

Frontiernet.net

At home or on the go, Frontier customers get more with Frontiernet.net.

On Frontiernet.net, you get breaking and local news, a personalized view for weather, sports with your favorite teams, your stock portfolio, daily games and exclusive video entertainment!

Plus, you can watch videos including movies and TV shows online and manage your Frontier services.

Stay connected

- > Access Frontiernet.net mail from any computer, tablet or mobile device. Simply log in at Frontiernet.net using your Frontier primary member ID (email address) or sub-account member ID and password and click the Mail button.
- > Integrate and use all your email services from one convenient place with Frontiernet.net webmail.
- > Connect to Facebook friends and text messages from your Frontiernet.net inbox.

Stay informed

- > Get breaking news, entertainment, finance, sports and lifestyle.
- > Personalize with your favorite teams, financial portfolios and local weather.

Be entertained

- > Watch TV shows, movies, sports and music videos online.
- > Play games, get game memberships, discounts and a lot more.

Get software and tools

- > Instant Messenger, Frontiernet.net Toolbar for quick access to your email, weather and news from any web page.
- > Frontiernet.net software settings restore tool sets, browser and Frontiernet.net mail settings—useful if you have new service or a new computer.

Set up email on your home computer

Client-based email* (POP/SMTP) uses software like Outlook Express to download email directly to your computer.

Open the email software you plan to use and enter the following information in the account setup window:

- > Email address: MemberID@Frontiernet.net
- > Incoming (POP): pop3.frontier.com
- > Outgoing (SMTP): smtp.frontier.com (requires authentication)
- > Incoming mail server: POP3
- > Incoming mail port number: 995 [make sure Secure Connection (SSL) is checked]
- > Outgoing mail port number: 465 [make sure Secure Connection (SSL) is checked]
- > Set password authentication for outgoing mail

Note: When updating the secure server settings, check the SSL checkbox first and then update the port number if necessary.

*There are numerous client-based email products supplied by non-Frontier third-party vendors. You may incur a fee if you require Premium Tech Support for these products. Alternatively,

Frontier also provides online self-help at frontier.com/helpcenter/frontiersecure for these applications. As always, we recommend that our customers use Frontier Homepage powered by Yahoo! access via Frontiernet.net, which provides a broad set of functionality to manage and access email anywhere and at any time.

For more email support information,
visit frontier.com/helpcenter/internet/using-your-email

Wi-Fi instructions

Locate your **Wi-Fi Network Name (SSID)** and **Wi-Fi Password (Wireless Network Key)**.^{*} This information is on your starter kit envelope. It can also be found on the side of your wireless router.

Now configure your Wi-Fi network:

1. Go to your computer's wireless network settings and refresh the network list.
2. Select your **Wi-Fi Network Name (SSID)** from the list. You may need to scroll through the list to find your SSID.
3. Enter the **ten-digit Wi-Fi password** in the password field to connect to your network.

^{*}See frontier.com/helpcenter/internet/wireless-network-setup for details and locations.

Free PC Security Scan

Free PC Security Scan is a free, easy-to-use diagnostic tool that will quickly assess the health of your PC and its connection settings, as well as recommend solutions to fix potential performance issues. Come back often and use our spam-free PC Health Check to get peace of mind to help prevent issues and check on your computer performance. Visit us at ftrsecure.com.

What is your internet connection speed?

The Frontier Speed Test is available to help you gauge the performance of your online experience.

Visit speedtest.frontier.com to determine the speed at which data is sent to or from your computer.

Assure reliable security for your Wi-Fi home network

The ten-digit number printed inside the brackets on your residential/Wi-Fi router is the Wi-Fi password (Wireless Network Key) needed to connect your computers to the router. WPA (Wi-Fi Protected Access) is the underlying security technology for the Wi-Fi (802.11b/g/n/ac) standard on the residential/Wi-Fi router.

Mac® OS X users: You may need to enter the "\$" character on the Wireless Network Key (for example, \$0690735510). For directions on connecting Mac computers via USB cable, visit frontier.com/helpcenter/internet/wireless-network-setup.

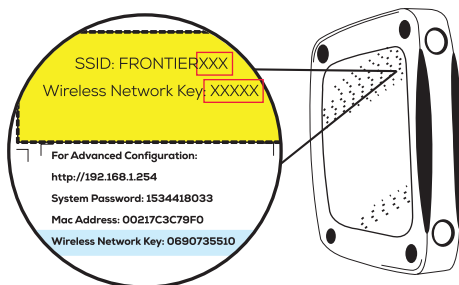
Mac and Macintosh are registered trademarks of Apple Inc.

Connect more computers to your Wi-Fi home network

You can connect more computers by Ethernet or wirelessly.

- > Connect an Ethernet cable from any available Ethernet port on the residential/Wi-Fi router to your computer's Ethernet port.

Location of your router's ten-digit Wireless Network Key code



- > Connect wirelessly with a wireless-enabled notebook or a computer with an 802.11b/g/n/ac wireless network adapter installed.

Note: You will need to use your ten-digit Wireless Network Key code (see illustration above).



Ethernet cable

Welcome to Unlimited Digital Voice

Unlimited Digital Voice is a next-generation digital home phone service. Unlimited Digital Voice delivers great sound quality, reliability and allows you to control how and when you communicate with over 20 features.

IMPORTANT INFORMATION

Unlimited Digital Voice, including 911 dialing, will not function during a power outage without battery backup power. Unlimited Digital Voice service is compatible with many monitored home alarms and medical monitoring systems, however, please check with your external system's provider to ensure compatibility. In cases where the external system is not compatible with VoIP, a traditional telephone line can be added to support the external systems.

Welcome to Unlimited Digital Voice

Easy and efficient to manage. Voice over Internet Protocol (VoIP) technology means reliable reception delivered in a digital signal that travels through the Internet to and from your home. Unlimited Digital Voice adds 20+ calling features including access from your computer.

Get Started

Configure your mailbox, set up your voice mail, customize your calling features

1. Dial *100 from your landline phone. If you are away from home, dial your home phone number.
2. When the system greeting begins, press * then enter your phone number and press *.
3. Enter your PIN followed by the # key.

You received your six-digit PIN when you placed your Unlimited Digital Voice order.

Three attempts can be made before it is disabled.

If you forget or disable your PIN call us.

A tutorial will guide you through the steps to set your own personalized PIN, and help you to set up more features.

To manage your features online, log in to the Unlimited Voice Web Portal at **frontier.com** using your Frontier ID and Password.

Create sub-account voice mailboxes online

Create up to 5 sub-account mailboxes, one for everyone in the family—each with a unique PIN and greeting and notification options.

1. Log in to the Unlimited Voice Web Portal at **frontier.com** using your Frontier ID and Password.
2. Select the **Settings tab**.
3. Select **Group Mailbox** on the Settings window.
4. Select **New Mailbox** at the lower left-hand corner of the window and enter the information in the pop-up window for the new mailbox. Click **Apply**.

From your smartphone or tablet

Download the MyFrontier App from your iTunes, or Google Play store.



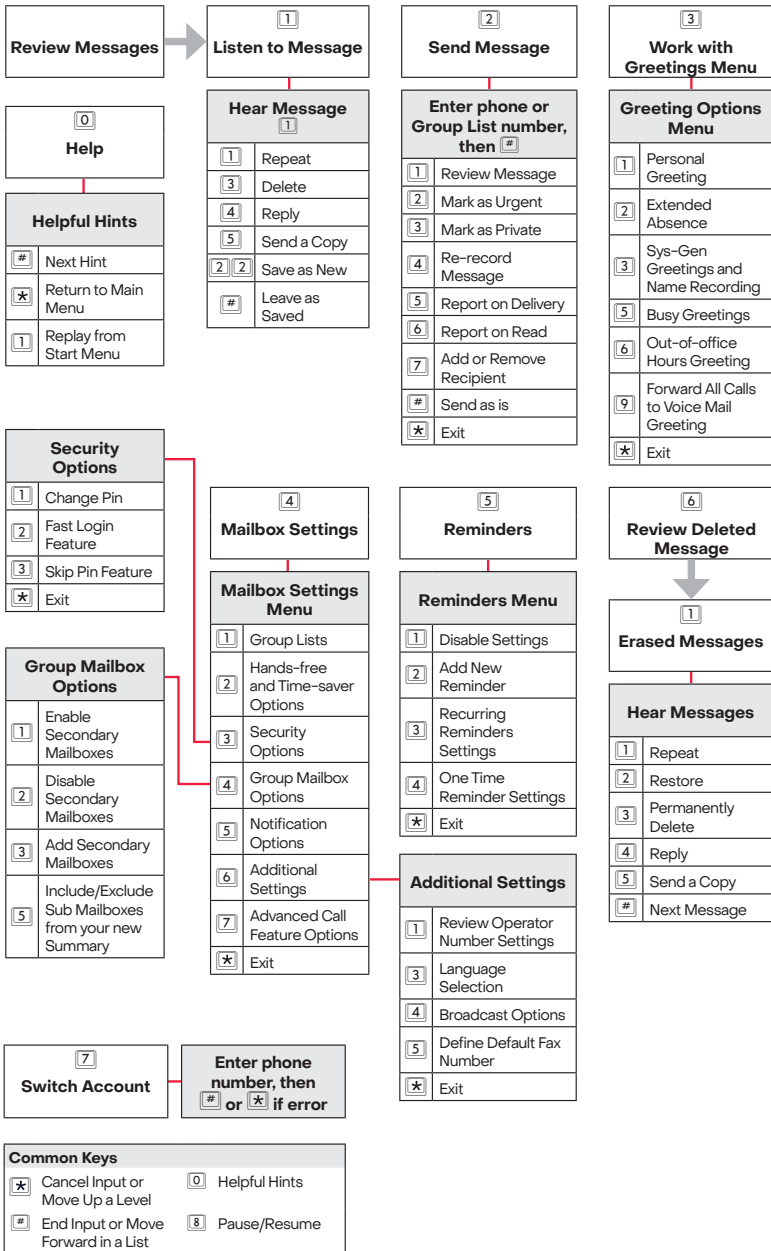
Top calling features

Features	Description	Manage online	Activate via phone	Deactivate via phone
Robocall Blocking	Blocks unwanted calls.	✓ Nomorobo.com	-	-
Caller ID	Displays the number and name of the caller before you answer the call.	✓	-	-
Voice Mail	Allows the caller to leave a message when you do not answer the call.	✓	✓	✓
Call Waiting/ Cancel Call Waiting	An indicator that an incoming call is waiting to be answered. Allows you to place the call on hold, not to accept it or send it to voice mail.	✓	Press Flash to activate during a call	-
Call Return	Dial *69 to return the last incoming call with valid Caller ID number.	-	Dial *69	Dial *89
Call Forward	Forward incoming call to another number	✓	Dial *72	Dial *73

Features	Description	Manage online	Activate via phone	Deactivate via phone
3 Way Calling	Allows you to talk to 2 other people in different locations at the same time.	-	Press Flash , dial the number to add, then press Flash	-
Anonymous Call Reject	Prevents anonymous calls from callers who block delivery of their caller ID information.	✓	Dial *77	Dial *87
Call Trace	Trace the number of the last call you received.	-	Dial *57	-
Speed Dial	Allows you to use 2 digit codes (20-49) as shortcuts for selected phone numbers.	✓	Dial *75	-
Find-me Follow-me/ Locate me	Allows up to 4 numbers to ring simultaneously on an incoming call.	✓	Dial *361	Dial *362

More great features are available. Go to frontier.com Help Center to download the Unlimited Digital Voice User Guide for more information.

Unlimited Digital Voice Quick Map*



To access this menu, dial *100 from your telephone or dial 1-844-994-4993 and enter your phone number and passcode.

*Features available depend on your service options

YOUR IMPORTANT FRONTIER INFORMATION

Record your important Frontier® information here for easy reference. With all your key information in one place, it's a snap to manage your account and get support when you need it. For your own security, if you need to record account passwords, write them down separately and keep them in a safe place.

General information

Customer name on account

Billing telephone number

Frontier primary member ID (Frontier email address)

Frontier primary member password

VM PIN #

Frontier password hint, if applicable

Your Frontier services were installed by

Wireless (RESIDENTIAL) router information

Manufacturer and model number

Wi-Fi network name (SSID)

Wi-Fi password (required for home Wi-Fi access)

Your Frontier primary member ID allows you to manage your account online. You can view and pay your bill, enroll in paperless billing, sign up for Frontier Auto-Pay, upgrade your account, get updates regarding your Frontier service and so much more.

Upgrade or add services anytime. Visit frontier.com.

SUPPORT QUESTIONS/ADDITIONAL RESOURCES

Accessibility support

Customers with disabilities Voice Calls: 1-800-288-8303
TTY Calls: 1-877-462-6606

Customer service

Customer service 1-800-921-8101

Repair center

Frontier Technical Support 1-800-239-4430
TTY calls 1-877-462-6606

Get answers 24/7 at frontier.com/helpcenter/contact-us or chat live with a Frontier representative.

Sign up for free paperless billing! Log in at frontier.com to sign up.

Learn more about Frontier Communications products and services at frontier.com.

Here are other ways you can quickly learn more:

- Tune to video tutorials on Help Channel 411.
- Click frontier.com/helpcenter for support including live chat.

Take advantage of Frontier's 24/7 customer support at frontier.com/helpcenter/contact-us or call **1-800-921-8101**

17319_05_SL_FL_UG_0822_RB_OL

©2022 Frontier Communications Parent, Inc. All Rights Reserved.



FRONTIER